

## Welcome to the College of Engineering and Polymer Science's Self-Guided Tour!

Our College is spread out through several buildings on campus. We invite you to explore on your own terms and learn more about what you are seeing.

- |                                                                                                                                                                                                                                                                                                                                                                                                                     |                                                                                                                                                                                                                                                                                                                                                         |
|---------------------------------------------------------------------------------------------------------------------------------------------------------------------------------------------------------------------------------------------------------------------------------------------------------------------------------------------------------------------------------------------------------------------|---------------------------------------------------------------------------------------------------------------------------------------------------------------------------------------------------------------------------------------------------------------------------------------------------------------------------------------------------------|
| <ul style="list-style-type: none"> <li>1. Auburn Science and Engineering Center<br/>*2-8 are inside the Auburn Science and Engineering Center</li> <li>9. Margaret F. Donovan Student Design Center</li> <li>10. Schrank Hall South</li> <li>11. Schrank Hall South Courtyard</li> <li>12. Whitby Hall</li> <li>13. Engineering Research Center*</li> <li>14. Gas Turbine Research and Testing Facility*</li> </ul> | <ul style="list-style-type: none"> <li>15. Goodyear Polymer Center and Chihuly Sculpture</li> <li>16. Polymer Engineering Academic Center</li> <li>17. National Polymer Innovation Center*</li> <li>18. Polsky Building</li> <li>19. Buchtel College of Arts and Sciences</li> <li>20. Timken Foundation Center for Precision Manufacturing*</li> </ul> |
|---------------------------------------------------------------------------------------------------------------------------------------------------------------------------------------------------------------------------------------------------------------------------------------------------------------------------------------------------------------------------------------------------------------------|---------------------------------------------------------------------------------------------------------------------------------------------------------------------------------------------------------------------------------------------------------------------------------------------------------------------------------------------------------|

\*Private appointments needed to visit these buildings. Contact Jordan Brlan, Associate Director of Recruitment and Retention, at [FutureEngineers@uakron.edu](mailto:FutureEngineers@uakron.edu). All other tour spots are available between 8 a.m. – 4:30 p.m. Monday – Friday.





### AUBURN SCIENCE AND ENGINEERING CENTER

This building, also known as ASEC (pronounced A-SIC), is where students spend most of their time. Located here is our advising center, co-op and placement office, student design center, dean's office, four of the five engineering department main offices (biomedical, civil, electrical and computer, and mechanical), and more.



### TAU BETA PI SCULPTURE

Membership in the UA chapter of the engineering honor society is for students who demonstrate excellence in academics and character. The official badge, called the Bent, is a watch key in the form of the bent of a trestle. The trestle is the load-bearing part of the bridge, a foundational concept of all civil engineering curriculum.



### AUBURN SCIENCE AND ENGINEERING CENTER LOBBY

Renovated in 2016, the space provides ample study areas and places to connect with students. In the center display area, you can view our design team projects including a formula combustion car, a Baja car, a sub-scale rocket, airplanes, a steel bridge, and concrete canoes.



### SWAGELOK CAREER CENTER

Adjacent to the lobby, our Swagelok Career Center provides quiet interview rooms for students when employers come to campus. The space was made possible by a generous gift from Solon-based Swagelok, a company that regularly hires students and graduates for a variety of engineering roles.



### STUDENT SUCCESS CENTER (1ST FLOOR)

This quiet study zone is an ideal space to stay on top of your studies! Free peer tutoring is offered here in a variety of subjects relating to your engineering or computing major. There is also ample study space to come together with classmates to prepare for exams or work on class projects.



### ADVISING CENTER (1ST FLOOR)

This office is for the academic advisors of students in the College of Engineering and Polymer Science. Our advisors help students find their way and make the most of their college experience.



### SLIDE RULE DISPLAY (2ND FLOOR)

Our collection of slide rules, donated by alumni, are tangible evidence of how far our College has come since its founding in 1913. Once required tools for all engineers to aid in their mathematical calculations, they now serve as visual representation of the alumni that have walked our halls.



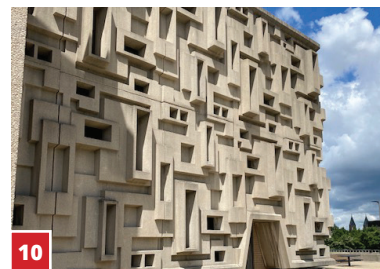
### CO-OP AND PLACEMENT OFFICE (2ND FLOOR)

We proudly boast that our co-op and placement office, the 5th oldest in the country, is the secret to our students' success. Services include resume review, interviewing workshops, career fairs, information sessions, and co-op/internship/full-time job placement.



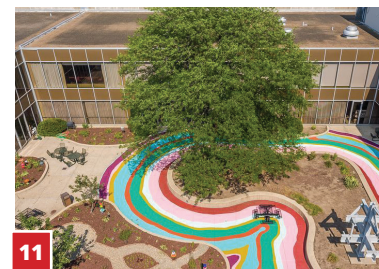
### MARGARET F. DONOVAN STUDENT DESIGN CENTER

Here is where you will find workshops of many of our engineering design teams. At the lobby, you will find displays from the Aero, Akronauts, Baja, NASA Mining Robotic and Zips Racing design teams.



### SCHRANK HALL SOUTH

This building is the home of many of our engineering technology programs. These programs embrace laboratory-based learning methods that prepare students for rewarding careers.



### SCHRANK HALL SOUTH COURTYARD

In honor of the University's 150th anniversary, the College took on the beautification of the Schrank Hall South Courtyard. In collaboration with Art Bomb Brigade and Arts Lift, two programs out of UA's Myers School of Art, this area has been transformed into a colorful and welcoming space for students.



### WHITBY HALL

This building is home to our Chemical, Biomolecular and Corrosion Engineering Department.



### ENGINEERING RESEARCH CENTER\*

Opened in 2012, the Engineering Research Center is a state-of-the-art building that includes labs and testing facilities, including Akron Engineering Tribology Laboratory, and the National Center for Education and Research in Corrosion and Materials Performance, among others.



### GAS TURBINE RESEARCH AND TESTING FACILITY BUILDING\*

This 13,400 square foot facility is home to mechanical engineering and civil engineering labs, including a lab that tests the behavior of materials when exposed to high temperatures.



### GOODYEAR POLYMER CENTER AND CHIHULY SCULPTURE

The Goodyear Polymer Center is one of three buildings within the School of Polymer Science and Polymer Engineering. Designed by Dale Chihuly, the sculpture in front of the building is made up of transparent polyurethane which was developed and tested for weather-resistance and durability by UA researchers.



### POLYMER ENGINEERING ACADEMIC CENTER

This is where student, faculty, and administrative offices for our polymer engineering program are housed. The center has a 134-seat lecture hall, distance-learning classroom, general purpose classroom, conference areas, and seminar rooms.



### NATIONAL POLYMER INNOVATION CENTER\*

Members of industry and national laboratories partner with our polymer experts on polymer characterization and advanced manufacturing projects in this facility. Students participating in undergraduate research may work in this building.



### POLSKY BUILDING

Located in downtown Akron, The Polsky Building is evidence of the University's close relationship with the city. Opened originally in the 1930s as a department store, now the building is home to our Computer Information Systems Cybersecurity, Networking, and Programming programs.



### BUCHTEL COLLEGE OF ARTS AND SCIENCES

Both Department of Computer Science and Department of Mathematics are located on the second floor of the building.



### TIMKEN FOUNDATION CENTER FOR PRECISION MANUFACTURING\*

In partnership with The Timken Co., Swagelok, and Schaeffler, The Center for Precision Manufacturing is a research center focused around developing new finishing technologies for the manufacturing industry. Opening in 2024, students and faculty will find new ways to improve manufacturing processes in partnership with industry.



### GET READY TO REALLY BELONG. SCAN TO REQUEST INFORMATION!

\*Private appointments needed to visit these buildings. Contact Jordan Brian, Associate Director of Recruitment and Retention, at FutureEngineers@uakron.edu. All other tour spots are available between 8 a.m. – 4:30 p.m. Monday – Friday.